

Technical/productional rider
- location version -

BEYOND



BEYOND

Concept, Choreography
Performers

Music
Dramaturgy

Installation

Costume

Producer

Business support

Technician

Production

Co-production

Supported by

Piet Van Dycke

Ella Copermans, Aurora Mesropyan, Josse Roger, Daniele Ippolito,
Marylou Aupic, Georgia Begbie

Bastian Benjamin

Marie Peeters

Arjan Kruidhof

Oona Mampuys

Samantha Cunningham

Jonas Vermeulen

Casper Van Overschee

Circumstances vzw

Festival Boulevard, CIRC'UIT, Circuswerkplaats Dommelhof, PERPLX,
Perpodium, Miramiro, Cirklabo, Stad Leuven, fABULEUS

The Flemish Government

1. General:

- Duration: 50 minutes
- Audience capacity:
 - For schools: 220
 - For public performances: 300
- Build-up: minimum 4 hours
- Build-down: 1h30
- Cast + crew: 8 people (unless otherwise specified)

2. Scenography:

Consists of:

- 3 small, curved ladders (steel)
- 1 U-ladder (steel)
- 6 ladders: 4 thin-walled, 2 thick-walled (aluminium) with a **length of 3,5 meters**.
- 1 rotating platform (very heavy – 200kg! It is strongly advised to not use stairs with it). Consists of three parts.
- Gray dance floor (8m x 8m) - This must be well-taped, preferably double-taped. Each section should be taped along the length to the floor. We will bring this dance floor and tape with us.

Technical drawing with exact dimensions, see page 5 & 6

Loading & unloading: should avoid stairs and requires a minimum width of 2.05m

This applies to all passages to the location.

3. Performance space:

- The performance space must be clearly delineated:
 - **Frontal, bifrontal or 360° audience setup:** seating/tribune/stairs to be provided by the organizer with **good visibility** for every seat.
 - Outdoors: we prefer a bifrontal audience setup (audience sits on both sides of the performance area)
 - Indoors: we prefer a frontal audience setup
 - Performance area: dimensions: W=9.00 m, D=9.00 m, H=5.5 m (**no less than this**)
 - The environment will be used as part of the performance.
- The location must always be communicated and approved in advance.
- Given the nature of the performance, no disturbing noises should be present at the location.
- The organization provides a performance area with dimensions **W =9.00 m x D = 9.00 m and a free height of 5.5 meters. This entire floor must be level and flat, without any irregularities, cracks, or holes (=necessary for the installation)**. If a stage/floor is built, we prefer a floor of StageDex, Layher Stage System, or other types of very stable underfloor (level) with dimensions W = 8.00 m, D = 8.00 m, H = 0.40 m, skirted with black fabric. The load capacity must be at least 200kg for a heavy, rolling rotating platform. In case of stage extensions, proscenium, etc., the ground surface must consist of one flat plane. The overall dimensions of the performance area should be W = 9.00m, D = 9.00m, H5.5m (**so slightly bigger than the stage itself**) In case of any doubt, please contact us!

4. Sound:

- The organizer's sound system will be used to amplify the music. Please provide a professional PA system (LR + sub) adapted to the capacity of the location. This sound system should be set

up and operational at the time of our arrival with a mixer with at least 4 mono channels and 2 monitor lines.

- A connection for a laptop should be provided. We will bring a laptop that we will plug in via a sound card to the organizer's mixing console.

For frontal audience setup:

- Front: LR + Sub
- Monitor: 2 monitors (stage left and right, connected separately) on 2 monitor lines.

For bifrontal/360° setup:

- Front: please provide at least 4 surround speakers (sub+top). All should be individually adjustable in volume via amp or separate input
- Monitor: please provide 4 monitors at the corners of the stage on 2 separate lines.

5. Light:

The performance must be fully illuminated (this is important for the safety of the performers)

- If there is enough daylight, no external lighting is required
- If there is too little daylight (inside or at nightfall), please provide the following lighting equipment:
 - Dimmers
 - 16 pcs 1 kW
 - 6 PAR64 CP 62
 - Filters:
 - 8*L201 PC format
 - 6*R119 Par format
 - 6 floor stands for the floor PARs
- We will bring our own lighting control system (5-pin DMX)
- We need a minimum of 14 dimmer channels
- We assume there is sufficient electrical capacity to operate everything without overloading.
- For the lighting plan, see P. 9

6. Video:

- No video will be used during this performance.

7. Smoke/hazer:

- No smoke will be used during the outdoor performance.

8. Light/sound control:

- Lighting and sound are controlled by our technician from in between the audience. Please provide a table and, for outdoor performances, a control tent.
- Please ensure a minimum width of 2 meters for the mixing desk and laptop, located in line with the stage, at least 2/3 of the distance from the stage.

9. Dressing rooms: .

- At least 2 dressing rooms with sanitary facilities, hot running water, large towels, and a makeup table with a lighted mirror should be available near the stage.

10. Catering:

- Please provide coffee, tea, water, and some fruit/snacks upon arrival.
- Before/after the performance: **a healthy lunch/dinner for 8 people**. Information about allergies and the number of vegetarians to be provided later.

11. Planning:

- The arrival time will be agreed upon (depending on location and performance times).
- Build-up +- 4u
- **Technical assistance:**
 - During setup, performance & build-down: at least 1 experienced technician familiar with the location.
- Audience access is granted only in consultation with our technician.
- Performance duration: 50 minutes.
- No intermission
- Build-down + 1h30min

12. Fire safety:

- There is no smoking on stage, nor open fires.

13. Parking:

- Please provide parking spaces **for two vans** from half an hour before arrival of our technician until an hour after the build-down, in a safe place close to the location.

14. Exceptions:

- Exceptions to some of these technical requirements can be made by prior agreement. If the location or available technical equipment does not meet these specifications, please contact us. We are happy to work together to find a solution and can bring additional equipment for a favorable rental fee.
- The organization is responsible for providing a safe storage space for the installation if the performance takes place over multiple days in a public space. Any damage caused by third parties is the responsibility of the organization and will be charged to Circumstances.
- **Performing in the rain is not an option due to safety concerns.** The organization is responsible for its own technical equipment in case of bad weather.
- This technical rider is an integral part of the contract
- We assume there is **sufficient power** to operate everything together without overload: music, (possibly) lights, and (possibly) smoke machine.

CONTACT

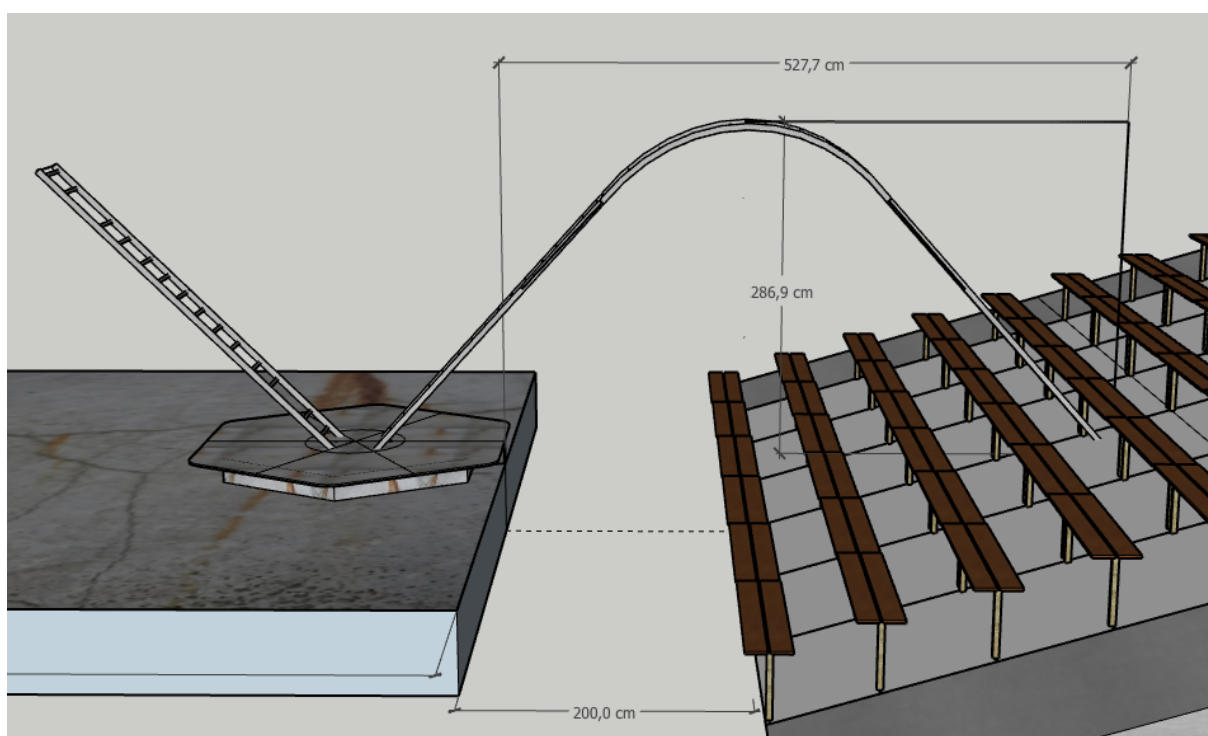
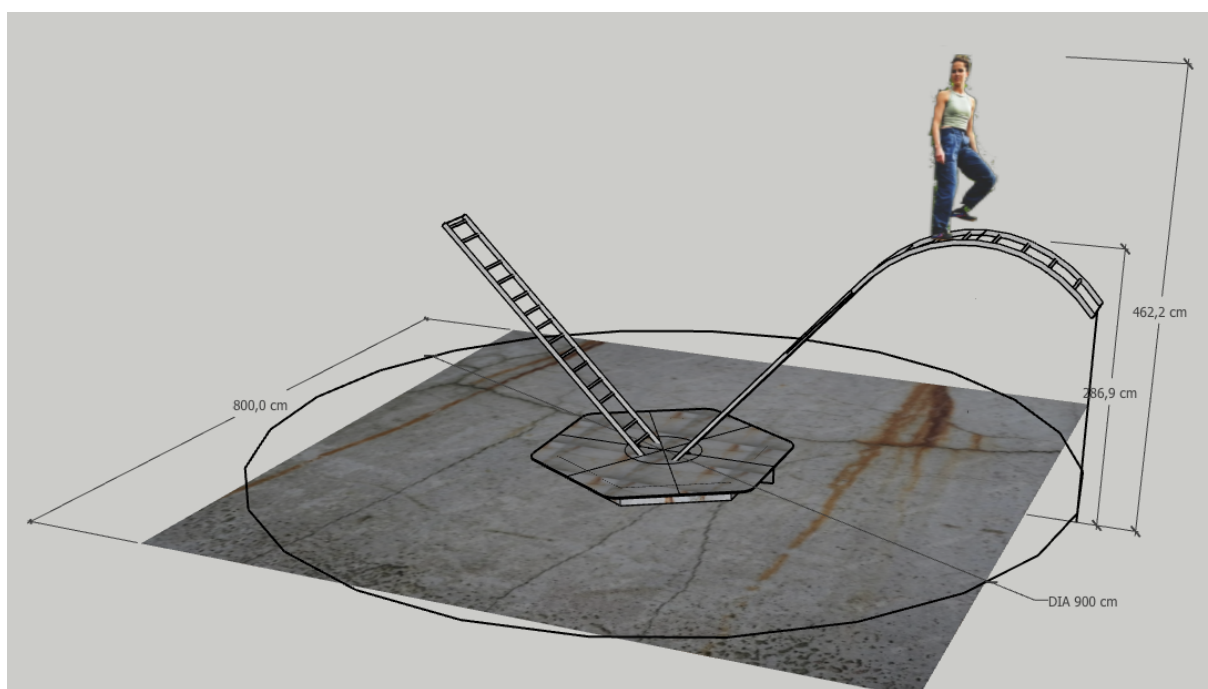
Contact Information:

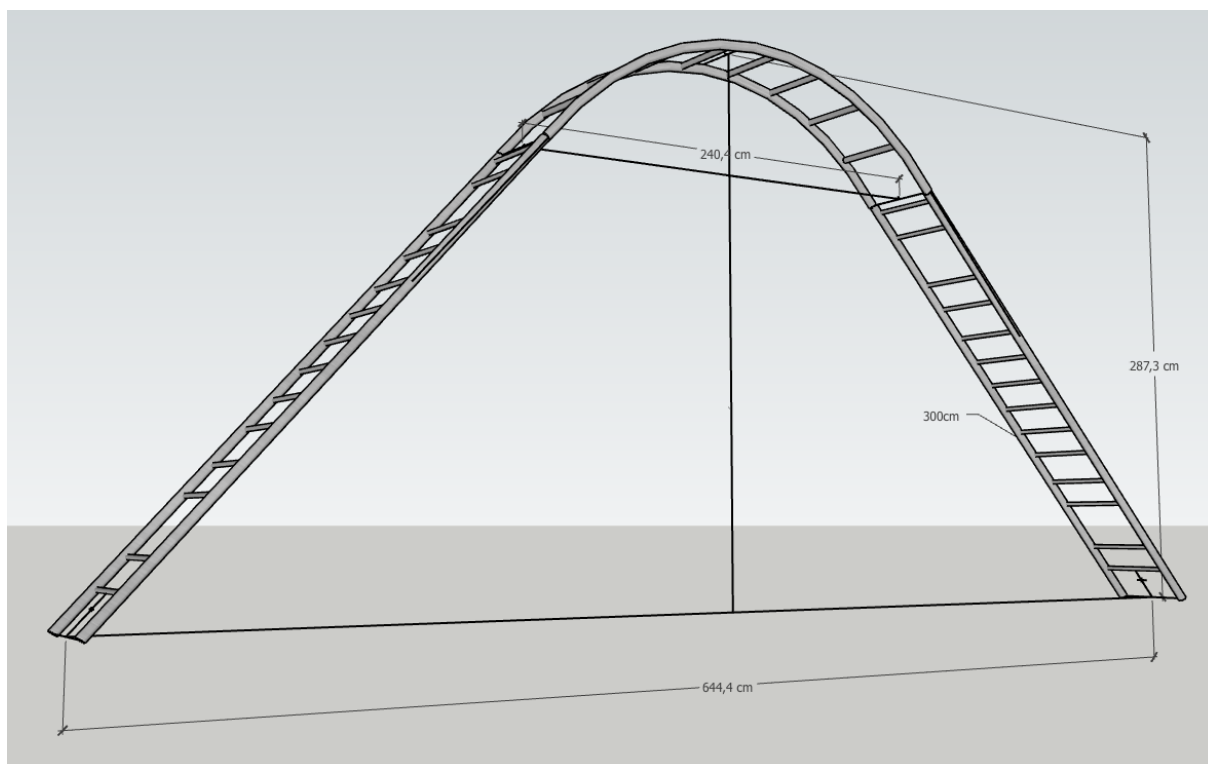
- General/Artistic: Piet Van Dycke - info@circumstances.be - +32 491 08 75 57
- Production: Sam Cunningham - circum.stances@outlook.com - +32 494 04 67 97
- Technical agreements: Casper van Overschee - casper.vanoverschee2@outlook.be - +32 478 73 49 19

ATTACHMENTS

- Technical drawing of the installation (P. 5-6)
- Photo's of the performance (P. 7-8)
- Lightplot (P. 9)
- Trailer:
 - <https://youtu.be/1f3f0BBYMSM>
 - <https://vimeo.com/1004390152?share=copy>

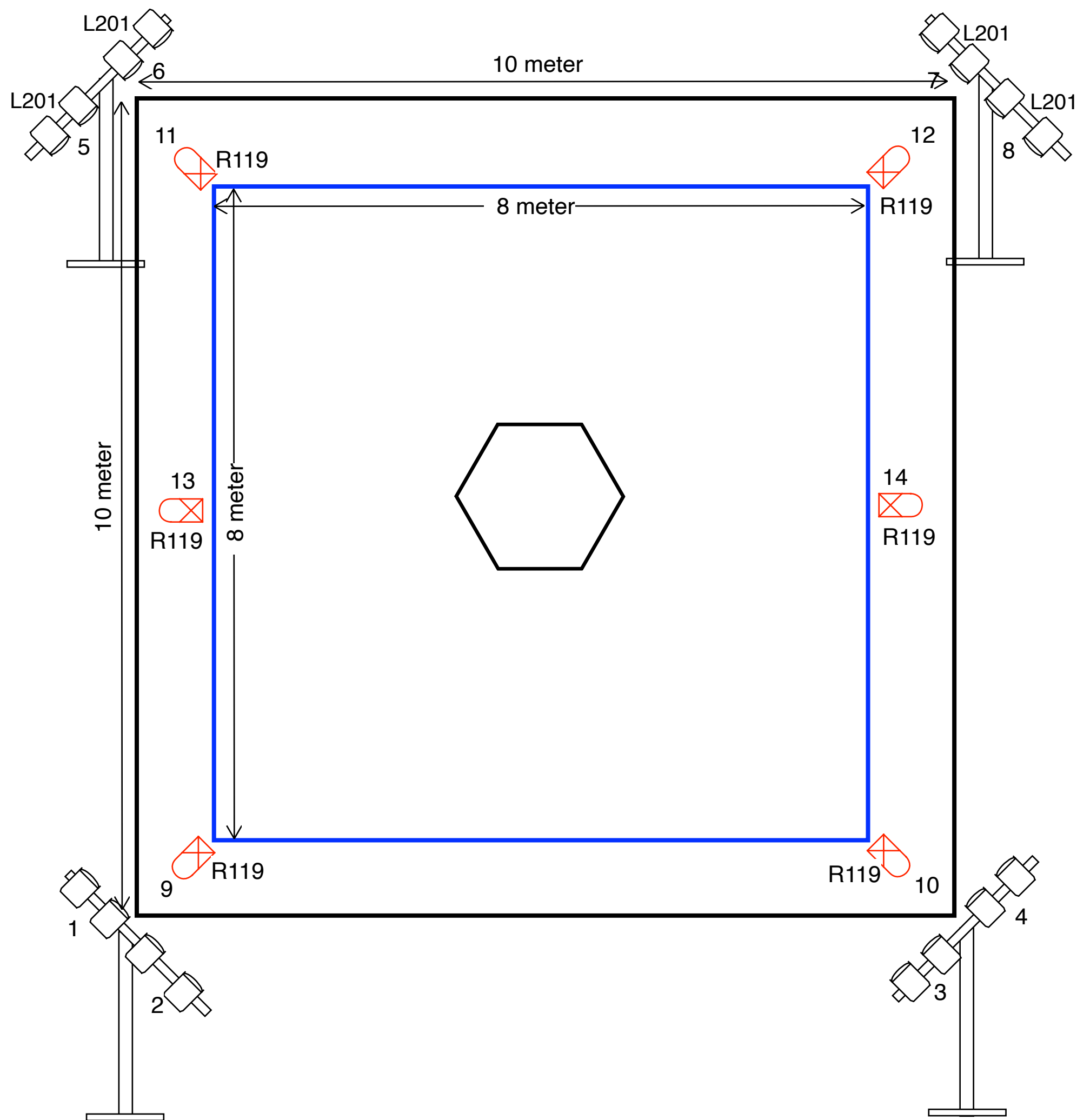
Dimensions











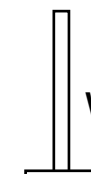
Lightplot: Beyond CIRCUMSTANCES



PAR64 CP62



1KW PC (Barndoors)



Wind up: minimum height 5 meter!!

RED = FLOOR LIGHT (Height 40cm)

BLUE = PLAY AREA

For more info: casper.vanoverschee2@outlook.be